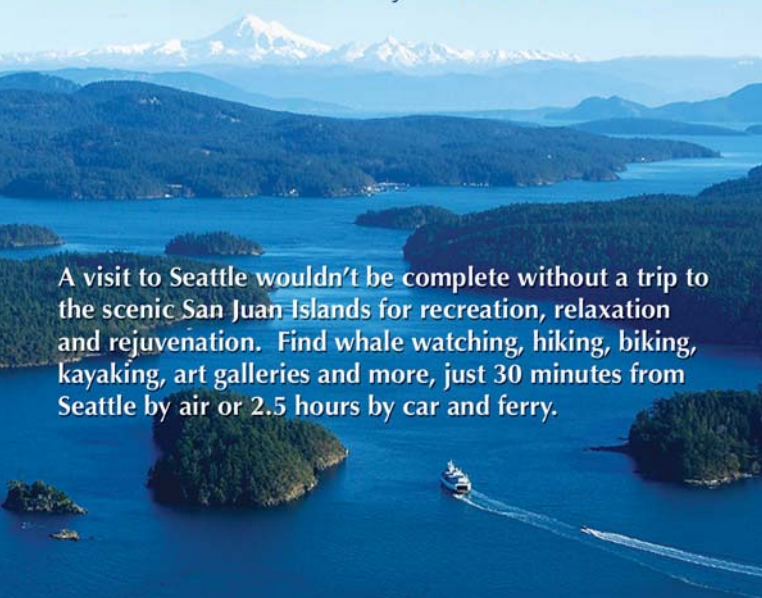


Real Islands, Real Close



A visit to Seattle wouldn't be complete without a trip to the scenic San Juan Islands for recreation, relaxation and rejuvenation. Find whale watching, hiking, biking, kayaking, art galleries and more, just 30 minutes from Seattle by air or 2.5 hours by car and ferry.

www.VisitSanJuans.com

LOPEZ ISLAND | ORCAS ISLAND | SAN JUAN ISLAND | FRIDAY HARBOR

www.seattleattractions.com
(877) 885-9452

FAVORITE
SEATTLE
ATTRACTIONS

BEST ATTRACTIONS IN THE PUGET SOUND AREA!

Be sure to visit the website regularly to get updated coupons and news about these great attractions, visitor information and links to help you make the most of your visit to Seattle.

Seattle Southside Visitor Services
14220 Interurban Avenue S., Suite 130
Seattle, WA 98168 • 877-885-9452
www.SeattleSouthside.com

Pier 56 Information Center
on Seattle's Historic Waterfront

Citywide Concierge Center
Inside Washington State Convention Center
on Pike between 7th and 8th
206-461-5840

Distributed by Certified Folder Display Service, Inc.
2407 South 200th Street, SeaTac, WA 98198
206-870-2470 • www.certifiedfolder.com

For information on membership or
advertising opportunities, please contact:

PUGET SOUND ATTRACTIONS COUNCIL
P.O. Box 58530 • Seattle, WA 98138
206-623-8632 • Fax 206-575-9255

CALL 1-877-885-9452 OR VISIT
www.seattleattractions.com

Whidbey & Camano Islands

The shortest distance to far away.

All-Season Getaway Vacations!
2 hours-drive south of Vancouver, Canada
and only 25 miles north of SEATTLE.

Request Free Visitor Guides & maps here:

USA: 888-747-7777

©Dan Kinnison

www.WhidbeyCamanoIslands.com



SEATTLE'S FAVORITE ATTRACTIONS

Whether you are planning a Washington State vacation or a Seattle day trip, this guide will help you find attractions that will delight and entertain.

For more information, visit us online:

WWW.SEATTLEATTRACTIONS.COM

Chinatown Discovery Tours Wing Luke Asian Museum

Woodland Park Zoo



A GLOBAL WILDLIFE ADVENTURE

"A cultural triumph deserving recognition" – Seattle Times' Best of 2008: Unsung Heroes and Uncommon Genius

Discover the Pacific Northwest through the region's first Smithsonian affiliate and the nation's only Asian Pacific American museum! Recognized for its architectural design, historical preservation, contemporary art, and innovative community-based exhibits, the newly expanded Wing Luke Asian Museum weaves together immigrant stories of Asian Pacific Americans and the Pacific Northwest.

Woodland Park Zoo is hailed as one of the finest zoos in the world for its award-winning exhibits. Nearly 300 animal species and lush plantings are displayed in the 92-acre setting, just minutes from downtown Seattle. Here, the world of jaguars, grizzlies, gorillas, elephants, reptiles, birds and more await your discovery. Starting May 2, 2009, visit the new home for **Humboldt penguins**, with rocky cliffs, tidelands, a blowhole, nesting burrows, underwater viewing and an interpretive play area.

Open 10 am-5 pm Tues.-Sun. (10 am-8 pm every first Thurs. & third Sat.)

719 South King Street • Seattle, WA 98104
206-623-5124 • www.wingluke.org



See Map on Pg. 17

601 N. 59th Street, Seattle, WA 98103
206-548-2500 • 548-2599 (TTY) • www.zoo.org

1 See Map on Pgs. 4 & 16

This coupon is good for \$2.00 off each general admission to Woodland Park Zoo for up to four people. Must present coupon at entry; one time only. Not valid with any other promotions or offers and not valid for special events or school groups. No cash value. Code: 0609

\$2.00 OFF

Argosy Cruises

Washington State History Museum



LAKES, LOCKS AND HARBOR TOURS.

WE TELL POWERFUL STORIES.

Dates of Operation: Cruises operate year-round.

Location: Visit the Argosy Visitor Center on Pier 56 for tickets and merchandise.

Directions:

Southbound on I-5: Take the James St. exit. Take your first right on Columbia and follow down the hill to Alaskan Way. Turn right on Alaskan Way. The piers will be on your left.

Northbound on I-5: Take the Madison St. exit. Turn left on Madison and continue down the hill to Alaskan Way. Turn right on Alaskan Way. The piers will be on your left.

Information & Reservations:

Phone: 206-623-4252

Email: sales@argosycruises.com

Group Reservations:

Phone: 206-623-1445

Website: argosycruises.com



Walk through Washington's history and encounter the sights, sounds, people, and places of Washington. Ride in a covered wagon, take a video trip down the Columbia River, and sit in a Hooverville shack while listening in on a conversation about the Depression. Interactive exhibits show the natural setting, lifestyle, and culture of Washington's first residents, exploration and settlement of the region, and the important people and events that have shaped our state, and the world.



See Map on Pg. 16

1911 Pacific Avenue • Tacoma, WA 98402
1-888-BE-THERE • www.WashingtonHistory.org

This coupon is good for \$2.00 off regular adult admission (up to 4 adults) at the History Museum. Not valid with other offers or discounts. Expires 6/30/2010.

\$2.00 OFF

\$2.00 OFF

This coupon is good for \$2.00 off each general admission to the Wing Luke Asian Museum for up to 4 people. Not valid with any other promotions or offers.

VISIT OUR WEBSITE

Visit argosycruises.com for virtual tours of our vessels, cruise schedules & pricing.



Woodland Park Zoo

A GLOBAL WILDLIFE ADVENTURE

Dates of Operation: Open every day except December 25.

Seasonal Hours:

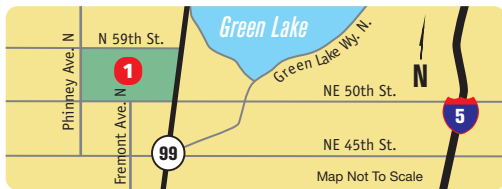
October 1–April 30: 9:30 a.m.–4:00 p.m.
May 1–September 30: 9:30 a.m.–6:00 p.m.

Directions: *By Bus:* from downtown Seattle, take #5 north to the West Entrance at N. 55th St. & Phinney Ave. N. *By Car:* from downtown Seattle, take I-5 north to N. 50th St. (Exit #169). Go west 1.3 miles to the South Entrance at N. 50th St. & Fremont Ave. N.

Information:

Phone: 206-548-2500 • TTY: 206-548-2599
Group Sales: 206-548-2525

Website: www.zoo.org



Chinatown Discovery Tours Wing Luke Asian Museum



ENJOY A CHINATOWN TOUR



Take a tour of Seattle's historic Chinese neighborhood. Stroll through Asian markets and shops, hear stories of our Asian American pioneers and learn about the vibrant community today. Experience our diverse cultures first-hand in Seattle's Chinatown-International District, the only International District in the nation.

25

See Map on Pg. 17

719 South King Street • Seattle, WA 98104
Located within the Wing Luke Asian Museum
206-623-5124 • www.seattlechinatowntour.com

VISIT OUR WEBSITE

Visit Woodland Park Zoo website for more information at www.zoo.org

Show this coupon and receive \$2.00 off/person on the Touch of Chinatown tour for 2 adults or more with Chinatown Discovery. Tour includes FREE general admission to the Wing Luke Asian Museum. Not good with other offers.

\$2.00 OFF



Washington State History Museum

WE TELL POWERFUL STORIES.

Hours: Tuesday–Saturday, 10 am–5 pm, with extended hours and free admission every third Thursday, 2–8 pm; Sunday noon–5 pm. Open Martin Luther King, Jr. Day, Presidents' Day, Veterans' Day, Easter Sunday. Closed Memorial Day, Labor Day, Thanksgiving Day, Christmas Day, and Independence Day.

Location: 1911 Pacific Avenue, Tacoma, WA 98402. From I-5 North or South, take the City Center exit, no. 133. Follow the 705/City Center sign to the 21st street exit where you will turn left. At Pacific Avenue turn right, and then right again into our parking lot.

Information and Reservations:

For information on exhibits, events and programs, visit www.WashingtonHistory.org or call 1-888-BE-THERE

Website: www.WashingtonHistory.org

Argosy Cruises

LAKES, LOCKS AND HARBOR TOURS.



A visit to Seattle is not complete without a view from the water! Argosy's narrated Harbor, Locks or Lakes Cruise feature history and facts of the area, breathtaking views and Seattle's famous places. Enjoy a spectacular dining experience including skyline views, 3-course menu and live entertainment on a Royal Argosy Brunch, Lunch or Dinner Cruise.

28

See Map on Pg. 17

Seattle Central Waterfront • Pier 56 • Argosy Visitor Center
Seattle, WA 98101 • 206-623-4252
www.argosycruises.com



This coupon is good for \$3.00 off a Harbor, Locks or Lakes Cruise (max. 4 people) with Argosy Cruises. CODE: FSA. Not valid with any other offer. Expires 6/30/10.

\$3.00 OFF

\$2.00 OFF

This coupon is good for \$2.00 off regular adult admission (up to 4 adults) at the History Museum. Not valid with other offers or discounts. Expires 6/30/2010.

Experience Music Project Science Fiction Museum

Victoria Clipper Vacations



THERE'S NO PLACE LIKE IT ON EARTH!

SEATTLE TO VICTORIA, BC



For current listings of exhibitions and special events, visit: empsfm.org

Rates

- Adults (ages 18-64) \$15
- Seniors (ages 65+) \$12
- Youth (ages 5-17) \$12
- Student or Military (with I.D.) \$12
- Members & children (ages 4 & younger) FREE

23

See Map on Pg. 17

Open daily from 10 am; closed Thanksgiving & Christmas

Note: Hours are subject to change. Call 1.877.EMP.SFM.1 or visit empsfm.org for current schedule.

325 5th Ave. N. at Seattle Center (Co-located with EMP)
1.877.EMP.SFM.1 • Box Office: 206.770.2702 • empsfm.org

Victoria – do it in a day, or overnight! Seattle and Victoria, BC are as close as 2½ hours, aboard the Victoria Clippers. Year round, enjoy the marvelous scenery, friendly passenger attendants and a full range of on-board amenities and services. Victoria offers olde-world charm, afternoon tea, Parliament and the world-famous Butchart Gardens. Overnight packages available.

San Juan Islands – Seasonal daily cruises/whale watch tours from Seattle, with kids free. Don't forget to inquire about packages to other exciting destinations offered by Clipper Vacations.

3

See Map on Pgs. 16 & 17

2701 Alaskan Way, Pier 69 • Seattle, WA 98121
206-448-5000 • 800-888-2535 www.victoriaclipper.com

Emerald Downs

Underground Tour

WWW.EMERALDDOWNS.COM

HISTORY WITH HUMOR

Dates of Operation:

Year-round, April–September live racing season; October–April multi-card simulcasting.

Information:

Main Information: 253-288-7000
General Information: 888-931-8400
Seating & Dining Reservations: 253-288-7711
Group Information: 253-288-7700

Private Events:

Emerald Downs is available for meetings and special events of 15–1,000 people. For information, please contact us at 253-288-7700 or visit our website at www.EmeraldDowns.com.

Directions:

Emerald Downs is located just off the 15th street exit from HWY 167 in Auburn.



Bill Speidel's Underground Tour is Seattle's most unusual attraction, a humorous stroll through subterranean storefronts and sidewalks entombed when the city rebuilt on top of itself after the Great Fire of 1889. The tour begins in a restored 1890s saloon in historic Pioneer Square, then plunges underground for a time-capsule view of the original downtown. All the while, tour guides regale you with sidesplitting, true stories. It's history with punch lines!

"Hilarious. Who knew history could be such fun!"
– New York Post

4

608 First Avenue • Seattle, WA 98104 See Map on Pg. 17
206-682-4646 • www.undergroundtour.com

\$3.00 OFF

This coupon is good for \$3.00 off adult admission (up to 4 adults) to EMP|SFM. Not valid with other offers. Expires 5/31/10.

10% OFF

This coupon is good for 10% off gifts and duty free. Present this coupon during your next trip aboard the Victoria Clipper and receive 10% off your purchase. No cash value. Expires 5/31/10.

2 FOR 1 ADMISSION

This coupon is good for 2 for 1 adult admission to Emerald Downs. Not valid with any other offers. Limit one coupon per person. Expires 9/27/09.

UNDERGROUND CAFE

Enjoy affordable meals and snacks or just lounge, before or after tours, in our casual cafe. We offer specially priced Tour-and-Lunch Combos every day.



Victoria Clipper Vacations

SEATTLE TO VICTORIA, BC

Schedule and Rates:

Victoria: Daily departures year-round from downtown Seattle's Pier 69. Roundtrip fares: from \$83 offseason and from \$103 during summer. Children free or discounted. Overnight accommodation and multiple destination packages available, including Seattle, Victoria, Vancouver, Canadian Rockies, San Juan Islands.

San Juans and Whale Watching: Seasonal daily departures from Seattle. Adult fares from \$70, children free. Tour and accommodation packages available. Reservations recommended.

Locations: Pier 69, Seattle
254 Belleville St., Victoria

Information and Reservations:

Phone: 206-448-5000
Outside Seattle: 800-888-2535
Email: reservations@victoriaclipper.com

Website: Book reservations online at www.victoriaclipper.com

Experience Music Project Science Fiction Museum

THE WORLD'S ONLY HANDS-ON MUSIC MUSEUM!



EMP|SFM is dedicated to the exploration of creativity and innovation in popular music, and the thought-provoking ideas and experiences of science fiction. EMP captures and reflects the essence of rock 'n' roll, and its influence on other recent genres using interpretive, interactive exhibitions with cutting-edge technology. SFM's exhibitions promote awareness and appreciation of science fiction literature and media while encouraging visitors to envision new futures for humanity.

23

See Map on Pg. 17

325 5th Ave. N. at Seattle Center (Co-located with SFM)
1.877.EMP.SFM.1 • Box Office: 206.770.2702 • empsfm.org

Underground Tour

HISTORY WITH HUMOR

Dates of Operation: Year-round.

Hours: Vary by season. Allow 90 minutes for the tour itself. Arrive early to ensure admission.

Location: 9 blocks south of Pike Place Market, 2 blocks east from the waterfront, in historic Pioneer Square, the city's birthplace. 608 First Avenue, Seattle, WA 98104.

Information: Phone 206-682-4646.

Website: Tickets and information at undergroundtour.com.

Rogues Gallery: The tour ends in this museum and gift shop, where you can view a photo display of Seattle luminaries and purchase Northwest mementos.

Underworld Tour: Special night-time historic tour of sin and flimflam in Seattle's infamous old Red-Light District. Adult beverage included. Age 21 and older. Evenings, year-round. Tickets online at undergroundtour.com. Call 206-682-4646 for information.

Underground Café: Convenient for lounging before or after tours, this affordable cafe offers a full menu, including sandwiches, salads, fruit and other healthy treats, plus Northwest microbrews.

Emerald Downs

PREMIER THOROUGHBRED RACING



Experience the thrill of racing! Emerald Downs, the premier Thoroughbred racing venue in the Pacific Northwest, offers live racing and family fun April through September. Enjoy dinner in our full service restaurant, grab a seat close to the rail to cheer on your horse or visit our family fun area every Sunday in the Paddock Park. Emerald Downs is a sure bet for a fun-filled day. We'll see you at the races!



24

See Map on Pgs. 28 & 18

2300 Emerald Downs Drive • Auburn, WA 98001
253-288-7000 • Toll-free 888-931-8400
www.emerald downs.com

10% OFF

This coupon is good for 10% off gifts and duty free. Present this coupon during your next trip aboard the Victoria Clipper and receive 10% off your purchase. No cash value. Expires 5/31/10.

SUBSEATTLE TOUR

A rollicking 90-minute bus ride through offbeat city neighborhoods, peppered with irreverent humor, sightings and stories of Seattle's vaunted subcultures. April–October. Tickets online at subseattletour.com. Call 206-682-4646 for information.

This coupon is good for \$3.00 off adult admission (up to 4 adults) to EMP|SFM. Not valid with other offers. Expires 5/31/10.

\$3.00 OFF

This coupon is good for 2 for 1 adult admission to Emerald Downs. Not valid with any other offers. Limit one coupon per person. Expires 9/27/09.

2 FOR 1 ADMISSION

FLYING THE PACIFIC NORTHWEST SINCE 1946

OUR GUIDES MAKE THE DIFFERENCE.

Dates of Operation: Every day except Thanksgiving and Christmas.

Flightseeing Schedule: Varies seasonally. Call 425.486.1257 or toll-free 866.435.9524 for available flights and to book.

Fares: Seattle flightseeing excursion is \$89, taxes included. Fuel surcharge may apply. Take \$10 off each fare with the attached coupon (up to four people per coupon).

Location: Kenmore Air's Seattle terminal is located at the southwest corner of Lake Union at 950 Westlake Ave. N., just minutes north of Seattle Center and downtown hotels.

Fleet: Kenmore Air is the nation's largest seaplane operator, with more than 20 seaplanes in its fleet. Seattle flightseeing excursions are typically flown in six-passenger Beaver or 10-passenger Otter aircraft. Every seat is a window seat!

Information and Reservations:
Phone: 425.486.1257 • Toll-free: 866.435.9524

Website: KenmoreAir.com



Seattle City Tours

Professional and knowledgeable guides make this an informative, enjoyable tour. Custom-built mini-coaches with large windows and air conditioning make it a comfortable way to see Seattle.

Mt. Rainier Tours

Experience old-growth forests, wildflower-filled meadows, and thundering waterfalls on this tour of glacier-clad Mt. Rainier. Hike and walk a little, a lot or not at all — options for all abilities.

Pre-Cruise Tours

Door-to-Door Service

from most Seattle, SeaTac & Tukwila Hotels
Call Toll Free 1-866-584-1122 • www.ToursNorthwest.com

Future of Flight Aviation Center & Boeing Tour

SHARE THE WONDER.

Dates of Operation: Every day except Thanksgiving, Christmas and New Year's Day.

Hours: 8:30am – 5:30pm daily. Boeing Tours* operate at 9am, 10am, 11am and 1pm, 2pm, 3pm.

Location: Just 20 miles north of downtown Seattle at Exit 189 off I-5 – follow signs.

Information and Reservations:
www.futureofflight.org
Phone: 1-800-464-1476 or 425-438-8100
Fax: 425-265-9808
Email: info@futureofflight.org

Café, The Boeing Store, Future of Flight Store

Private Events: The Future of Flight is a unique venue for special events or meetings of 10 – 1400 people. For information call 425-438-8100 or visit online www.futureofflight.org.

*Children must be 4' tall or 122 cm for the Boeing Tour.



Tillicum Village®

A WORLD CLASS CULTURAL ADVENTURE

Experience the best of the Northwest in just 4 hours. Enjoy a cruise on Puget Sound; a scrumptious Indian-style baked salmon feast; a spectacular stage show that is both entertaining and educational; plus the magical beauty of Blake Island State Park. Learn to stake salmon the Native way, shop for treasures in our gift gallery and watch artists at work.

"Those darling deer, that delicious dinner, the captivating production...I hated to leave."
– Nancy Leson, Seattle Times restaurant critic

6

See Map on Pgs. 16 & 17

Pier 55 on Seattle's Central Waterfront • Seattle, WA 98101
206-933-8600 • 800-426-1205 • www.tillicumvillage.com

VISIT THE SAN JUAN & VICTORIA

Check KenmoreAir.com for Internet Special fares as low as \$89 each way to the San Juans and \$99 each way to Victoria. 45-minute flight times from Lake Union. Great hotel packages also available!

VISIT OUR WEBSITE

Visit the Future of Flight website for more information at www.futureofflight.org

MT. RAINIER OR SEATTLE TOUR

\$3.00 OFF

Valid through December 2009. No cash value. Not valid with any other offer (max. 4 people). Visit www.ToursNorthwest.com for schedule and price.



\$5.00 OFF

This coupon good for \$5.00 off full adult fare for inclusive cruise/dinner/show experience (max. 4 people). CODE: TV1. Not valid with any other offer. Expires 4/1/10.



OUR GUIDES MAKE THE DIFFERENCE.

FLYING THE PACIFIC NORTHWEST SINCE 1946



Boeing™ Assembly Plant

Witness the awe-inspiring process of jumbo jet assembly up close inside the world's largest building. See 747, 777 and 787 Dreamliner planes in various stages of assembly and manufacture for airline customers around the world.

Future of Flight Aviation Center

Explore the new, spacious Aviation Center through interactive exhibits and learn about the newest developments in the airline industry. Visit the Boeing Store for authentic Boeing merchandise.

Door-to-Door Service

from most Seattle, SeaTac & Tukwila Hotels

Call Toll Free 1-866-584-1122 • www.ToursNorthwest.com

For the ultimate Northwest experience, fly off the water in a seaplane for a bird's-eye view tour of the Emerald City! During your 20-minute narrated flightseeing adventure from Lake Union in the heart of Seattle, you'll enjoy unforgettable views of the city's famous houseboat communities, the beautiful University of Washington campus, the magnificent Lake Washington estates of the rich and famous, the Space Needle and Seattle Center, the glittering downtown skylines of Seattle and Bellevue, the bustling Elliott Bay waterfront, the homes of the Mariners and the Seahawks, the snow-capped Olympic and Cascade peaks, and much more!

Southwest corner of Lake Union

950 Westlake Ave. N. • Seattle, WA 98109 See Map on Pgs. 16 & 17
425.486.1257 • 866.435.9524 • KenmoreAir.com



\$3.00 OFF BOEING™ TOUR

Valid March–December 2009. No cash value. Not valid with any other offer (max. 4 people). Visit www.ToursNorthwest.com for schedule and price. Call Toll Free 1-866-584-1122

This coupon is good for \$10 off any Seattle flightseeing excursion fare, up to four people per coupon. All discounted fares must be booked on the same flight on a single reservation. Offer pending space availability. Not valid with other offers. Expires 5/31/10.

\$10 OFF

Tillicum Village®

Future of Flight Aviation Center & Boeing Tour

SHARING NORTHWEST TRADITIONS SINCE 1962

SHARE THE WONDER.

Dates of Operation: March–December

Seasonal Hours: April through November

Location: Depart from Pier 55, Seattle's Waterfront, foot of Seneca Street. Cruise 8 miles across Puget Sound via tour boat to Blake Island Marine State Park.

Experience: Get out on the water and cruise to a secluded island park. A delicious steaming clam and nectar appetizer is followed by a traditional Indian style feast complete with a Native dance presentation. Hike the island trails where Chief Seattle played as a child, visit with our friendly staff, explore the cultural displays or drop a toe into the waves gently lapping on the island beaches.

Tillicum Village featured on BBQ with Bobby Flay; at South Beach Wine and Food Festival; won "Best Entree" at the Bite of Seattle!

Information or Reservations:

Local: 206-933-8600 Toll-Free: 800-426-1205

Website: www.tillicumvillage.com — Book Online!

Under lease, operated in conjunction with Washington State Parks and Recreation Commission.



The Future of Flight Aviation Center & Boeing Tour* features hands-on exhibits for the whole family. Design your own airplane and touch the high-tech skin of the new Boeing 787 Dreamliner in the Aviation Center's gallery. Take the world-renowned Boeing Tour, which showcases The Boeing Company and the Everett product line, the 747, 777 and 787. As part of the tour, visitors will tour the largest building in the world by volume. On the Boeing flight line, visitors will see airplanes in various stages of flight test and manufacture for airline customers around the world.

Minutes north of Seattle • Exit 189 off I-5
1-800-464-1476 • www.futureofflight.org



See Map on Pg. 16

VISIT OUR WEBSITE

Visit www.tillicumvillage.com for details and additional information. Call 1-800-426-1205 for reservations.

Visit the Future of Flight website for more information at www.futureofflight.org

VISIT OUR WEBSITE



Future of Flight.

AVIATION CENTER & BOEING TOUR

Museum of Glass

ALL GLASS. ALL THE TIME.

Hours: Summer Hours Memorial Day—Labor Day: 10 am to 5 pm Monday - Saturday, 12 pm to 5 pm Sunday, 10 am to 8 pm third Thursday of each month. **Fall/Winter/Spring Hours** (Closed Mon. & Tues.): 10 am to 5 pm Wednesday - Saturday, 12 pm to 5 pm Sunday, 10 am to 8 pm third Thursday of each month. *Closed on New Year's Day, September 12, Thanksgiving and Christmas.*

Location: Located on downtown Tacoma's Thea Foss Waterway. Take I-5 to Tacoma (from either north or south). Take exit #133 (City Center) to I-705 north. Take the S. 21st St. Exit. Turn left onto S. 21st St. Turn right onto Pacific Ave. Turn right onto Hood St. Turn right at stop sign onto S. 15th St., which becomes a ramp that curves to left. Turn left onto Dock St. The Museum of Glass is on the left. There is a parking garage under the building.

Information & Reservations:
Phone: 253.284.4750 or 1.866.4MUSEUM
Fax: 253.396.1769 Email: info@museumofglass.org

Group Reservations: Special pricing available for groups of 10 or more. Museum Store and Museum Cafe: Open during Museum hours. Private Events: The Museum of Glass is a unique setting for private events with 10 to 600 guests. For info, call 253.284.4711 or email info@museumofglass.org.

Teatro ZinZanni

LOVE, CHAOS & DINNER!



Step into an intimate hideaway, a place of dreams and divas, music and madmen, cirque and sensuality...a realm where elegance and absurdity blend to create an extraordinary evening of Love, Chaos & Dinner! Teatro ZinZanni is a three-hour whirlwind of cabaret, cirque and live music served up with a five-course gourmet feast designed by celebrated Northwest chef Tom Douglas. Unique artists from six continents combine talents nightly to create a blend of vaudeville and romance that *The New York Times* calls "this city's hottest ticket!"

7

Show times: Wed.-Sat. 6:30 p.m., Sun. 5:30 p.m. See Map on Pg. 17

Seattle Center's Theatre District • 222 Mercer St., Seattle
Box Office: 206-802-0015 • www.zinzanni.org

The Museum of Flight

DREAM, DISCOVER, SOAR

Dates of Operation: Every day except Thanksgiving and Christmas.

Hours: 10:00 a.m. - 5:00 p.m. daily, first Thursday of every month until 9:00 p.m.

Location: Just ten minutes from downtown Seattle or Sea-Tac Airport on historic Boeing Field. Take Metro bus 174 or Exit 158 from I-5 and follow the signs. Ample free parking.

Information and Reservations:

Phone: 206-764-5720

Fax: 206-764-5707

Email: info@museumofflight.org

Group Reservations: Special pricing available for groups of 10 or more. Call 206-768-7104.

Wings Café: Full-service, on-premises café operated by McCormick & Schmick's during all Museum open hours. Call 206-762-4418.

Private Events: The Museum of Flight is a spectacular and unique setting for private events for groups of 10 to 3,500 guests. For info, call 206-764-5706 or email privateevents@museumofflight.org.

Website: www.museumofflight.org

Space Needle

LIVE THE VIEW



Located 520' above Seattle, the Observation Deck offers 360° of breathtaking indoor and outdoor viewing, and is proud to present its newest addition — SkyQ. Composed of five electronic kiosks that share a wealth of information and depth of the physical view of the city, SkyQ offers the ultimate hands-on way to experience and interact with Seattle and its surrounding areas. Zooming in on icons, discovering the hidden treasures of the city and experiencing the individuals that make Seattle a world-class city is the ultimate way to begin your trip — and it's all at your fingertips!

Located at the Seattle Center

Info: 206-905-2111; 800-937-9582

Groups: 206-905-2180; 800-964-7695

8

See Map on Pg. 17

\$2.00 OFF

This coupon is good for \$2.00 off regular adult admission (up to 4 adults) at the Museum of Glass. Not valid with other offers. Expires 6/30/10.

\$2.00 OFF

This coupon is good for \$2.00 off regular adult admission (up to 4 adults) at The Museum of Flight. Not valid with other offers. Expires 6/30/10.

VISIT OUR WEBSITE

Visit www.zinzanni.org for menu, beverage and show information about Seattle's Hottest Dinner Theatre!



\$1.00 OFF

Purchase any regular admission ticket at \$1 off the regular price. Only valid for Space Needle admission tickets. Cannot be combined with other discounts. Coupon must be surrendered at time of use. No refunds, exchanges or cash value. Offer expires May 20, 2010. Offer not valid May 22, 2009-September 7, 2009.

LOVE, CHAOS & DINNER!

ALL GLASS. ALL THE TIME.

Dates of Operation: Year-round, Wednesday through Sunday evenings.

Location: 222 Mercer Street at 3rd Avenue North, across from Pacific Northwest Ballet in the heart of the Seattle Center's Theatre District.

Directions:

From the North: Southbound I-5, take Exit 167 toward "Seattle Center." Turn right on Fairview N. Left onto Valley. Valley becomes Broad. Turn slight right onto Harrison. Right onto 5th N, left onto Roy, left onto 2nd N., left onto Mercer.

From the South: Northbound I-5, take Exit 167 toward "Seattle Center." Note - Exit is on left side of freeway. Turn right on Fairview N., left onto Valley. Valley becomes Broad. Turn slight right onto Harrison, right onto 5th N., left onto Roy, left onto 2nd N, left onto Mercer.

From the South via I-90: Take Exit 2C to merge onto I-5 N. Take Exit 167 on left toward "Seattle Center."

Information & Reservations:

Phone: 206-802-0015; Online: zinzanni.org

Group Reservations for 15 or more:

Phone: 206-801-0013; Email: shanson@onereel.org or kristinew@onereel.org



Come to the Cone! Experience the art of glass in a breathtakingly beautiful museum on Tacoma's revitalized waterfront. Feel the heat as you watch a team of artists create masterpieces from molten glass in the hot shop amphitheater. See edgy exhibitions in the galleries, shop for glorious gifts in the store, discover the art on the outdoor plazas, explore the waterway and stroll across the remarkable Chihuly Bridge of Glass.

19

See Map on Pg. 16

1801 Dock Street • Tacoma, WA 98402
253-284-4750 or 1-866-4MUSEUM
www.museumofglass.org

This coupon is good for \$2.00 off regular adult admission (up to 4 adults) at the Museum of Glass. Not valid with other offers. Expires 6/30/10.

\$2.00 OFF

VISIT OUR WEBSITE

Visit www.zinzanni.org for menu, beverage and show information about Seattle's Hottest Dinner Theatre!

Space Needle

The Museum of Flight

LIVE THE VIEW

DREAM, DISCOVER, SOAR

Dates of Operation: Open year-round

Seasonal Hours:

Open seven days a week, 365 days a year. Hours vary, please call or visit our website for details. Summer hours are 9:00 a.m. to midnight.

Location: Seattle Center, 400 Broad Street.

Information and

SkyCity Restaurant Reservations:

For Pacific Northwest cuisine that is matched only by the views served with it, be sure to visit SkyCity, the Space Needle's revolving restaurant. 206-905-2111 or toll free 1-800-937-9582

SkyLine Banquet Facility and Group Tours:

206-905-2180 or toll free 1-800-964-7695

Website:

www.spaceneedle.com



The thrill and wonder of flight comes alive in more than 85 aircraft, interactive exhibits and family activities. Climb inside the West Coast's only supersonic Concorde and walk in the footsteps of presidents aboard the first jet Air Force One. Take a wild flight in one of 8 flight simulators or try out the cockpit of the Mach 3 Blackbird spyplane. Experience stories of unimaginable bravery amid 28 WWI & II fighters in the Personal Courage Wing and discover our future among the stars in our new *SPACE: Exploring the New Frontier* exhibit.

20

See Map on Pg. 16

Minutes from downtown Seattle & Sea-Tac Airport • Exit 158 off I-5
206-764-5720 • www.museumofflight.org

This coupon is good for \$2.00 off regular adult admission (up to 4 adults) at The Museum of Flight. Not valid with other offers. Expires 6/30/10.

\$2.00 OFF

DAY & NIGHT TICKET

Visit the Space Needle twice for one low price! For just a few dollars more you can purchase the Day & Night pass which allows you to view the beautiful city of Seattle once in the day and once at night. See ticket booth for details. Tickets must be used within a 24-hour period.

Puyallup Fair & Events Center

YEAR-ROUND FAMILY FUN

Fair Dates: The Puyallup Fair Sept. 11–27, 2009
The Spring Fair in Puyallup, April 15–18, 2010.

Fairtime Hours:

Puyallup Fair – Exhibits open at 10 a.m.
Spring Fair – Thurs. 2 p.m.–10 p.m.,
Fri. & Sat. 10 a.m.–10 p.m., Sun. 10 a.m.–8 p.m.

Location: Just 37 miles south of Seattle and nine miles east of Tacoma, in downtown Puyallup.

Information: 24-Hour Hotline, (253) 841-5045

Facility Rental: State-of-the-art facilities for a wide range of events, for 100 to 50,000+.
SillyVille Train station now offering unique picnics. Rental info: (253) 841-5011.

Group Sales: Plan an unforgettable event for your group at the Fair, with ticket discounts, catered events and free bus parking.
Group sales: (253) 845-1771.

Website: thefair.com

Email: info@thefair.com



VISIT OUR WEBSITE

Visit www.thefair.com for Puyallup Fair discounts, deals and year-round events.

Seattle Center Monorail

CONNECTING DOWNTOWN & SEATTLE CENTER



Glide into Seattle Center on the world's first full-scale Monorail system. Once there visit the Space Needle or one of the many other world class attractions near the Seattle Center Monorail station. Or, travel to the heart of downtown Seattle where you will find yourself within easy walking distance of all major hotels, shopping, eateries, and Pike Place Market with the Seattle waterfront just beyond.

9

See Map on Pgs. 12 & 17

Downtown Station: Westlake Center Mall, 3rd Floor at 5th & Pine
Seattle Center Station: Across from the Space Needle & EMP
206-905-2620 • www.seattlemonorail.com

This coupon is good for \$1.00 off any Monorail ticket purchase of \$5.00 or more. Please redeem coupon with the station attendant at time of purchase, one coupon per transaction. Not valid with any other promotions or discount offers. No cash value. Expires 5/31/10.

\$1.00 OFF

Point Defiance Zoo & Aquarium

CLOSE ENCOUNTERS!

Dates of Operation: Open year-round. Check website for winter schedule and holiday closures.

Seasonal Hours: 9:30 a.m. to 6 p.m. Memorial Day through Labor Day. Hours vary by season.

Location: Situated within 700-acre Point Defiance Park, 5400 N. Pearl St., Tacoma. From Interstate 5, take Exit 132 and follow the signs to Highway 16 West. Exit at 6th Avenue, continue straight through the first stoplight and take a right onto Pearl St. at the next light. Continue on Pearl St. for 3.2 miles to the main entrance to Point Defiance Park. Once in the park, directional signs will lead you to the Zoo.

Information: 253-591-5337

Website: www.pdza.org



\$2.00 OFF

This coupon is good for \$2.00 off each general admission to Point Defiance Zoo & Aquarium for up to four people. Must present coupon at entry; valid one time only. Not valid with on-line ticket purchases, at ticket kiosks, for school groups, or during Zoollights. Expires 4/30/10. A facility of Metro Parks Tacoma. Discount code: 15

Seattle Art Museum

SAM SEATTLE ART MUSEUM



Photo: Lara Swimmer

SAM features 2,600 objects in 35 international galleries, including the Australian Aboriginal Gallery (the only one like it in the US), the Modern and Contemporary Gallery, which features a Korean coat made of 40,000 dog tags, and a 16th century Italian Room that will take you back to the Renaissance. Don't miss the Family Room, where the kids can blow off some steam, a Shop with unequaled fine art wares and books, and a Restaurant that focuses on local, sustainable food and drink.

10

See Map on Pg. 17

1st Ave. and Union St. • Seattle, WA 98101
206.654.3100 • www.seattleartmuseum.org

Show this coupon and receive \$2.00 off one admission to the Seattle Art Museum or Seattle Asian Art Museum. Not valid with other discount offers. May not be valid for all special exhibitions. Coupon expires 1/20/10.

\$2.00 OFF



Seattle Center Monorail

WWW.SEATTLEMONORAIL.COM

Ride the Monorail for a fun, quick, and convenient link between downtown Seattle and the Seattle Center.

Service Schedule:

Open Daily*,
Trains run approximately every ten minutes.

Information:

Hours of Operation & Rates: 206-905-2620
Group Rates/Options: 206-905-2600

Website:

www.seattlemonorail.com

*Except Thanksgiving Day and Christmas Day



Puyallup Fair & Events Center

PUYALLUP FAIR
&
Events Center

YEAR-ROUND FAMILY FUN



Get ready for fun! There's always something taking place at the Puyallup Fair and Events Center. Year 'round events include entertainment events, car, animal, antique, seasonal, sports and recreation, home and garden shows and much more. Visit one of the top 10 fairs in the nation, September 11-27, 2009 and The Spring Fair in Puyallup, April 15-18, 2010. Call 24-Hour Hotline for event schedule, (253) 841-5045.

16

See Map on Pgs. 22 & 16

Puyallup Fair & Events Center
110 9th Avenue SW • Puyallup WA 98371
253-841-5045 • thefair.com

VISIT OUR WEBSITE
Visit www.thefair.com for Puyallup Fair discounts, deals and year-round events.

Seattle Art Museum

SEATTLE ASIAN ART MUSEUM



Discover the splendor of Asian Art and culture at SAM's historic 1933 Art Deco building set in beautiful Volunteer Park. The Seattle Asian Art Museum displays one of the nation's top collections of art from Japan, China, Korea, India, and Southeast Asia, including contemporary works of art. Visit www.seattleartmuseum.org to find out more about special exhibitions, public programs, and special family activities on First Free Saturdays.

10

See Map on Pg. 16

Volunteer Park, 1400 E. Prospect • Seattle, WA 98122
206.654.3100 • www.seattleartmuseum.org

Point Defiance Zoo & Aquarium

CLOSE ENCOUNTERS!



Expect the unexpected at beautiful Point Defiance Zoo & Aquarium! From the exotic Asian Forest Sanctuary to the new Animal Avenue, the Zoo & Aquarium offers families a place to play and explore. You'll see seahorses and sharks, peacocks and penguins, wolves and walrus, all in one place. See a live animal show at the Wild Wonders Outdoor Theater. Café and gift shop, wheelchair and stroller rentals available. Parking is free.

17

See Map on Pgs. 22 & 16

5400 N. Pearl Street • Tacoma, WA 98407
253-591-5337 • www.pdza.org



9 601 000 21



This coupon is good for \$2.00 off each general admission to Point Defiance Zoo & Aquarium for up to four people. Must present coupon at entry; valid one time only. Not valid with on-line ticket purchases, at ticket kiosks, for school groups, or during Zooights. Expires 4/30/10. A facility of Metro Parks Tacoma. Discount code: 15

\$2.00 OFF

\$1.00 OFF

This coupon is good for \$1.00 off any Monorail ticket purchase of \$5.00 or more. Please redeem coupon with the station attendant at time of purchase, one coupon per transaction. Not valid with any other promotions or discount offers. No cash value. Expires 5/31/10.

SAM SEATTLE ASIAN ART MUSEUM

\$2.00 OFF

Show this coupon and receive \$2.00 off one admission to the Seattle Art Museum or Seattle Asian Art Museum. Not valid with other discount offers. May not be valid for all special exhibitions. Coupon expires 1/20/10.



Rosalie Whyel Museum of Doll Art

CLOSE ENCOUNTERS

Dates of Operation: Open 7 days a week (closed New Year's Day, Easter, 4th of July, Thanksgiving Day and Christmas Day).

Location: Just 10 miles from downtown Seattle in Bellevue.

Hours & Prices: Monday-Saturday 10 a.m. to 5 p.m., Sunday 1 p.m. to 5 p.m. Admission charged.

Museum Store: Our Museum Stores are pleased to offer an array of antique and contemporary dolls, books, teddy bears, miniatures, and doll-related gifts of many varieties — and in all price ranges. See our website, too!

Information:

Phone: 425-455-1116

Fax: 425-455-4793 • E-mail: dollart@dollart.com

Website: www.dollart.com

Overview: A wealth of artistry, history, and technology, uniquely presented to create an experience to be treasured by men, women and children of all ages.



Seattle Aquarium

EVERYBODY WANTS IN



See playful otters, incredible octopus, flashy fish, birds that fly underwater, and other amazing sea creatures. **Touch** live sea stars, urchins and more in the *Life on the Edge* exhibit. **Explore** the underwater world of the Pacific Northwest and immerse yourself in a Pacific Coral Reef surrounded by colorful tropical fish. Open daily. Located on Seattle's scenic downtown waterfront.



See Map on Pg. 17

1483 Alaskan Way • Pier 59 • Seattle, WA 98101
206-386-4320 • www.seattleaquarium.org



Show this brochure to receive \$1.00 off regular adult admission on up to four adults for the Seattle Aquarium. Not valid with any other offers. Expires 6/30/10.

\$1.00 OFF

2 FOR 1 ADMISSION

This coupon is good for two admissions for the price of one to Rosalie Whyel Museum of Doll Art. (Lesser admission is free.) Expires 3/31/10.

Ride the Ducks of Seattle

TOUR SEATTLE BY LAND AND BY SEA!



You'll See: Pike Place Market, historic Pioneer Square, Seattle's spectacular waterfront, Safeco Field and Qwest Field, the downtown shopping district and funky Fremont. Then, splash into Lake Union for the thrill of a lifetime! When was the last time you drove a truck into the water on purpose?

Dates of Operation: Year-round

Tour Length: 90 minutes

Location: Directly across from the EMP, diagonal to the Space Needle on the corner of 5th and Broad.

Information: (206) 441-DUCK (3825)

Website: www.ridetheducksofseattle.com

BUY TICKETS ONLINE
www.ridetheducksofseattle.com

San Juan Safaris

WHALE WATCHING & WILDLIFE TOURS



San Juan Island — Seattle's Favorite Getaway. Search for orca whales on the new, fast 55-foot boat Sea Lion. The vessel's greater speed gives greater range and more whale sightings. No one sees more whales than San Juan Safaris. Enjoy calm, pristine island waters. Stay the day or spend the night. Don't miss this opportunity to make memories forged from natural beauty with a company known for respectful interaction with wildlife. The Fun Starts Here! Space limited. Reserve now.



See Map on Pg. 16

Friday Harbor, WA • San Juan Islands
800-450-6858 • 360-378-1323 • www.SanJuanSafaris.com



This coupon is good for one free Orca in Our Midst book by Orca expert Howard Garrett, with purchase of tour. No cash value. Expires 10/31/10.

FREE ORCA WHALE BOOK



Seattle Aquarium

EVERYBODY WANTS IN

Hours: Open daily 9:30 a.m.–5:00 p.m. Holiday hours on Thanksgiving Day (9:30 a.m.–3 p.m.), Christmas Eve (9:30 a.m.–3 p.m.) and Christmas Day (Noon–5 p.m.). Aquarium closed on June 12, 2009.

Aquarium Store & Café: Take a break and enjoy family-friendly food in the new Aquarium Café. Celebrate the Northwest's environment with a memento from our store.

Location: Pier 59 at 1483 Alaskan Way, Seattle's Central Downtown Waterfront, just below the Pike Place Market.

Telephone: (206) 386-4300 or 24-hour recorded information (206) 386-4320.

Website: www.seattleaquarium.org

Inspiring conservation of our marine environment

Rosalie Whyel Museum of Doll Art

CLOSE ENCOUNTERS



Dedicated to the preservation and exhibition of dolls as an art form. Surround yourself with fantasy, whimsy, and delight at the Rosalie Whyel Museum of Doll Art. It is home to one of the finest permanent doll collections, as well as rotating exhibits, featuring over 1200 dolls, toys, and miniatures dating from the 1600s to present-day artists. It's never too late to enjoy your childhood!

14

See Map on Pgs. 20 & 16

1116 108th Avenue NE • Bellevue, WA 98004
425-455-1116 • www.dollart.com



This coupon is good for two admissions for the price of one to Rosalie Whyel Museum of Doll Art. (Lesser admission is free.) Expires 3/31/10.

2 FOR 1 ADMISSION

\$1.00 OFF

Show this brochure to receive \$1.00 off regular adult admission on up to four adults for the Seattle Aquarium. Not valid with any other offers. Expires 6/30/10.



San Juan Safaris

WHALE WATCHING & WILDLIFE TOURS

Schedule and Rates:

Multiple daily departures: Mid-April to October.
Whale Watching: \$75 Adult, \$49 Child 2-12.
Private charters, group rates and overnight accommodations available. The **Whale Plane Package:** Includes round trip air from Seattle on Kenmore Air, and the Whale Watching & Wildlife Tour. \$295 Adults, \$269 Child.

Location:

Friday Harbor, San Juan Island, on Washington's Scenic Byway, 90 miles north of Seattle. San Juan Safaris' boat & office are just steps from the ferry landing or Kenmore Air dock.

Directions:

Use the **Whale Plane Package** for direct flights — only 40 minutes. Or drive north to catch the San Juan Island ferry at Anacortes. Getting here is half the fun & it's easy. Phone now or book online!

Reservations:

800-450-6858 or 360-378-1323
Fun@SanJuanSafaris.com
www.SanJuanSafaris.com
Reservations highly recommended.



Ride the Ducks of Seattle

TOUR SEATTLE BY LAND AND BY SEA!



See the sights of the Emerald City by land and by sea! Climb aboard for a fun-filled tour on a fully-restored, WWII amphibious landing craft. Coast Guard-certified captains will quack you up with local folklore, historical information, funky music and just plain fun! This 90-minute adventure has been voted one of the top five "Must Do's" in Seattle!

15

See Map on Pg. 17

Directly across from the EMP, diagonal to the Space Needle on the corner of 5th and Broad.
206-441-DUCK (3825) • www.ridetheducksofseattle.com



Buy TICKETS ONLINE
www.ridetheducksofseattle.com

FREE ORCA WHALE BOOK

This coupon is good for one free Orca in Our Midst book by Orca expert Howard Garrett, with purchase of tour. No cash value. Expires 10/31/10

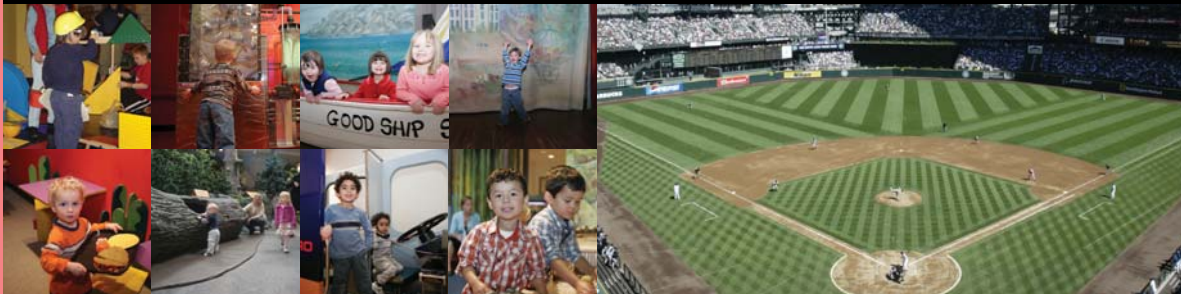
The Children's Museum, Seattle

Safeco Field Tours



22,000 SQUARE FEET OF FUN & ENTERTAINMENT

HOME OF THE SEATTLE MARINERS!



The Children's Museum, Seattle offers families a fun, interactive place to explore and learn. Throughout the year, the museum has fun hands-on activities for kids birth to 10. Create your own work of art in our Imagination Studio. Explore distant lands and cultures in Global Village. Climb the mountain and see how Northwest plants and animals thrive. Lots more fun is found with our special national touring exhibits. Open daily at 10 a.m. Easy access via the Monorail from downtown.

Located in the Seattle Center, Center House
305 Harrison Street, Seattle, WA 98109
206-441-1768 • www.thechildrensmuseum.org

26

See Map on Pg. 17

Dates of Operation: April-October: 10:30 a.m., 12:30 p.m. and 2:30 p.m. on days when there are no home games. On days when there are games at 6:00 p.m. or later then ONLY the 10:30 a.m. and 12:30 p.m. tours will be given. **November-March:** 12:30 p.m. and 2:30 p.m. Tuesdays through Sundays. Holiday times may vary.

Group Tours: Groups may schedule private tours at a discounted rate. Tour packages are also available for special events including birthday parties, team banquets and educational packages. Contact our Tour Coordinator at 206-346-4241 for more information or visit www.seattlemariners.com.

13

See Map on Pg. 17

Tour one of the premier ballparks in America. Tours include areas of the ballpark that are not normally open to the public: press box, luxury suites, field, visitor clubhouse, and much more.
Pn: 206-346-4241 Website: www.SeattleMariners.com

SAFECO FIELD TOURS

FREE ADULT ADMISSION (\$7.50 VALUE)

This coupon is good for one free adult's exhibit admission to The Children's Museum, Seattle with one paid child admission. Not valid with any other offer or group visit. Expires 5/31/10.

Burke Museum

Northwest Trek Wildlife Park

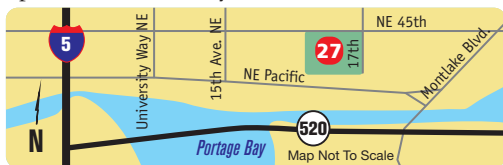


DINOSAURS TO TOTEM POLES!

REAL. WILD. LIFE.



See real dinosaur skeletons, rock crystals, fossils, butterflies, and a stunning collection of Native American masks and totem poles. Plus, changing exhibits every few months. Visit the museum's café and gift shop. Open daily 10am-5pm, & until 8pm on first Thursday each month.



Located on the UW Campus • NE 45th St. and 17th Ave. NE
Box 353010 • Seattle, WA 98195 • 206-543-5590
www.burkemuseum.org

27

See Map on Pg. 16

Big bison, elegant elk, brawny bears and wily wolves all have a home at Northwest Trek. Join the fun spotting northwest native herd animals from your guided tram tour as they mingle in the free-roaming area. Walk forest pathways to naturalized exhibits where beavers swim, wolverines play and lynx pounce. Break out of the norm and into the forest, meadow and wetland beauty that is Northwest Trek.

18

See Map on Pg. 16

Click or call for seasonal closures
11610 Trek Drive East • Eatonville, WA 98328
360-832-6117 • www.nwtrek.org

This coupon is good for \$2.00 off each general admission to Northwest Trek Wildlife Park for up to four people. Must present coupon at entry, valid one time only. Not valid with on-line tickets, discounted admissions, special events or programs. Expires 4/30/10. A facility of Metro Parks Tacoma. Discount code: 15

\$2.00 OFF

\$1.00 OFF

Show this brochure and receive \$1 off the price of admission for each member of your party to the Burke Museum (up to 4 people). Not valid with any other offer. Expires 12/09.



- | | |
|---|---|
| 1 Woodland Park Zoo pg. 3 | 15 Ride the Ducks of Seattle pg. 19 |
| 2 Washington State History Museum pg. 3 | 16 Puyallup Fair & Events Center pg. 21 |
| 3 Victoria Clipper Vacations pg. 5 | 17 Point Defiance Zoo & Aquarium pg. 21 |
| 4 Underground Tour pg. 5 | 18 Northwest Trek Wildlife Park pg. 15 |
| 5 Tours Northwest pg. 7 | 19 Museum of Glass pg. 23 |
| 6 Tillicum Village pg. 7 | 20 The Museum of Flight pg. 23 |
| 7 Teatro ZinZanni pg. 9 | 21 Kenmore Air pg. 25 |
| 8 Space Needle pg. 9 | 22 Future of Flight pg. 25 |
| 9 Seattle Center Monorail pg. 11 | 23 EMP/SFM pg. 27 |
| 10 Seattle Art Museum pg. 11 | 24 Emerald Downs pg. 27 |
| 11 Seattle Aquarium pg. 13 | 25 Chinatown Discovery/Wing Luke pg. 29 |
| 12 San Juan Safaris pg. 13 | 26 The Children's Museum, Seattle pg. 18 |
| 13 Safeco Field Tours pg. 15 | 27 Burke Museum pg. 18 |
| 14 Rosalie Whyel Museum of Doll Art pg. 19 | 28 Argosy Cruises pg. 29 |

FAVORITE SEATTLE ATTRACTIONS

(877) 885-9452

www.seattleattractions.com

For information on membership or advertising opportunities, please contact:

PUGET SOUND ATTRACTIONS COUNCIL

P.O. Box 58530 • Seattle, WA 98138

206-623-8632 • Fax 206-575-9255